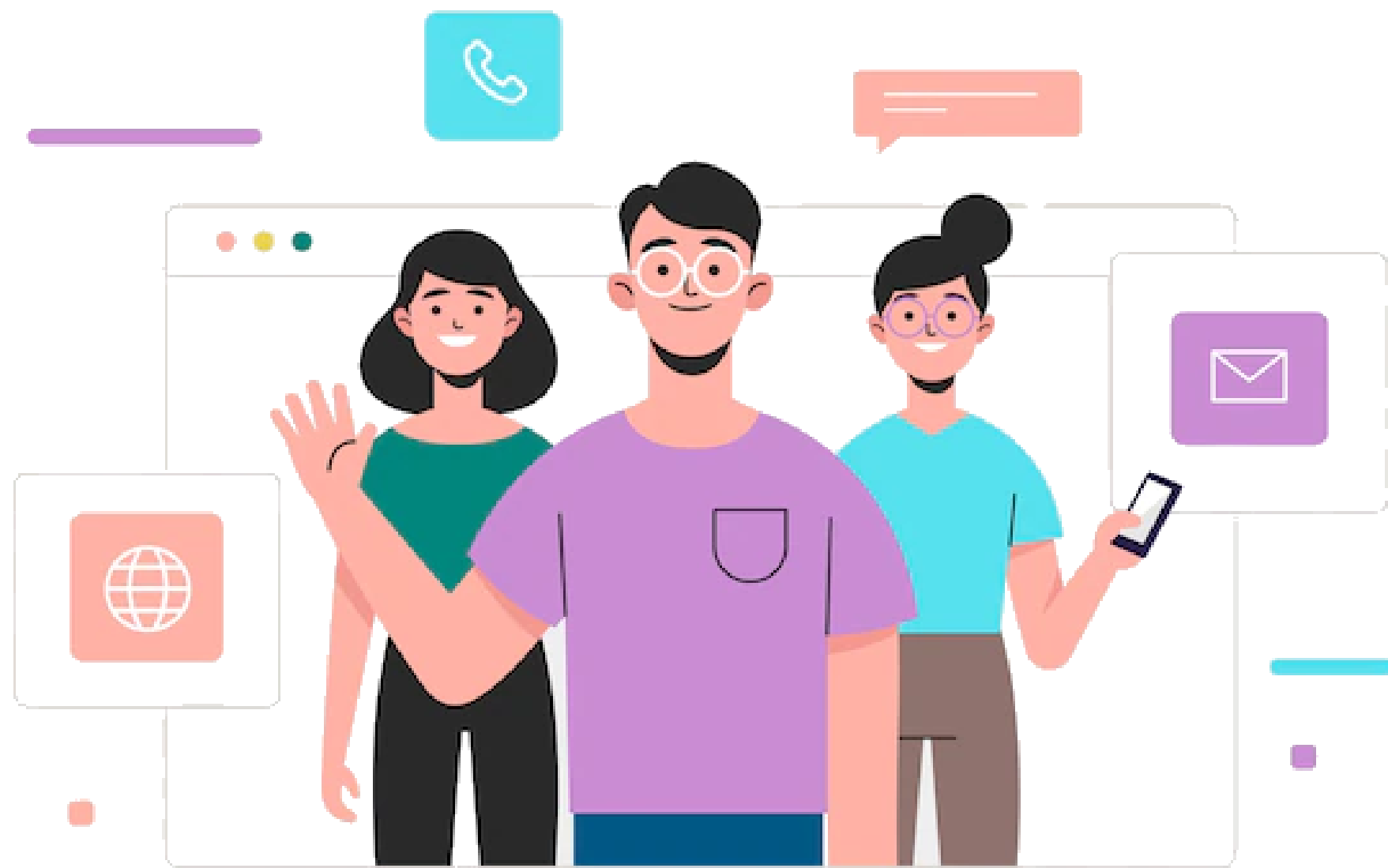




Diversified Learning Platform Aggregator



What is WitsClass

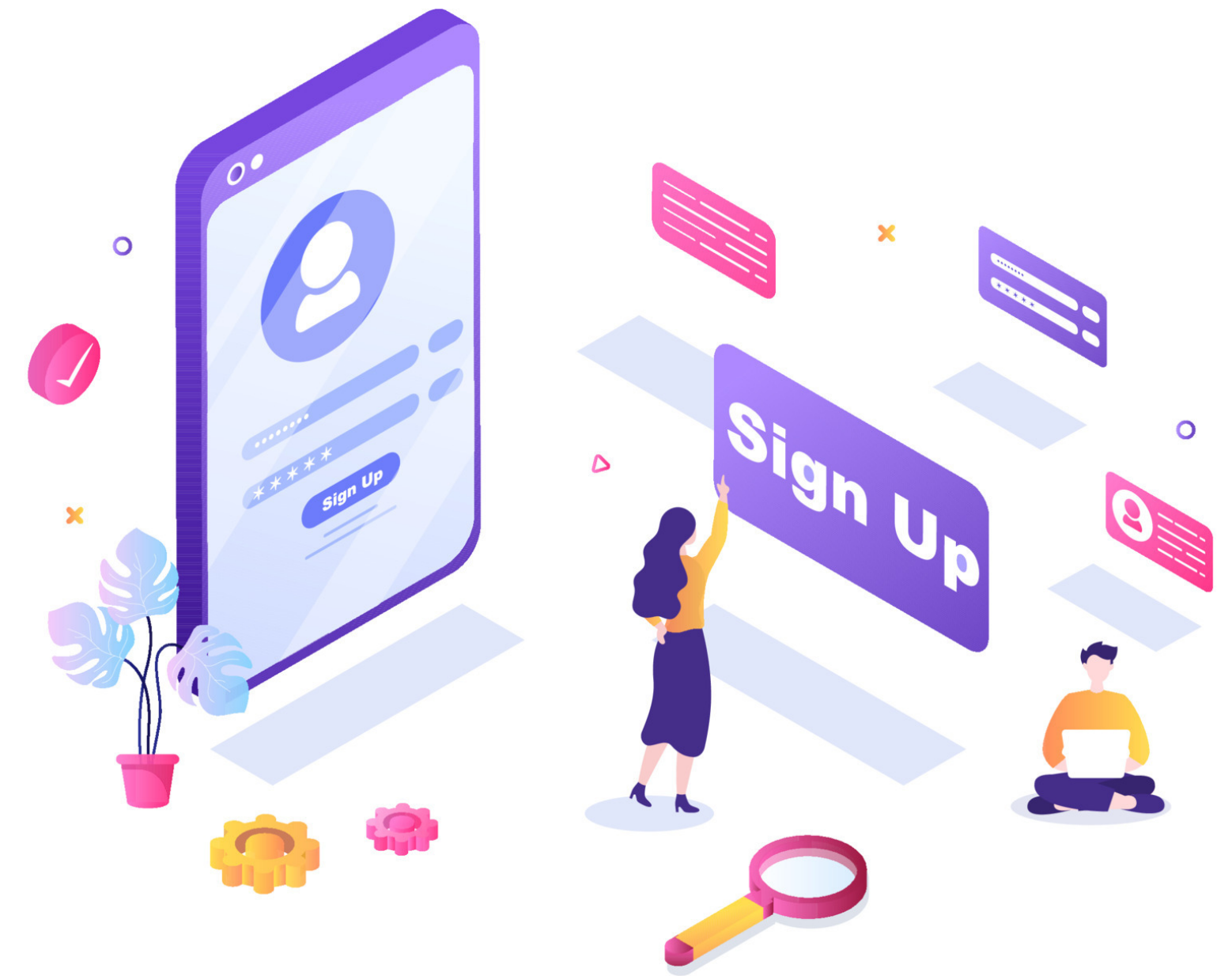
Wits Class helps teachers, training institutes, colleges, schools, specific business organisations, motivational groups, corporate companies and video selling individuals by providing user friendly online learning B2B platform through managed service and technology

Features

Secure and verified authentication

User registration is based on selected academic level or preferred profile data along with mobile number verification using OTP

The OTP-based login system provides friendly and secure authentication for users.

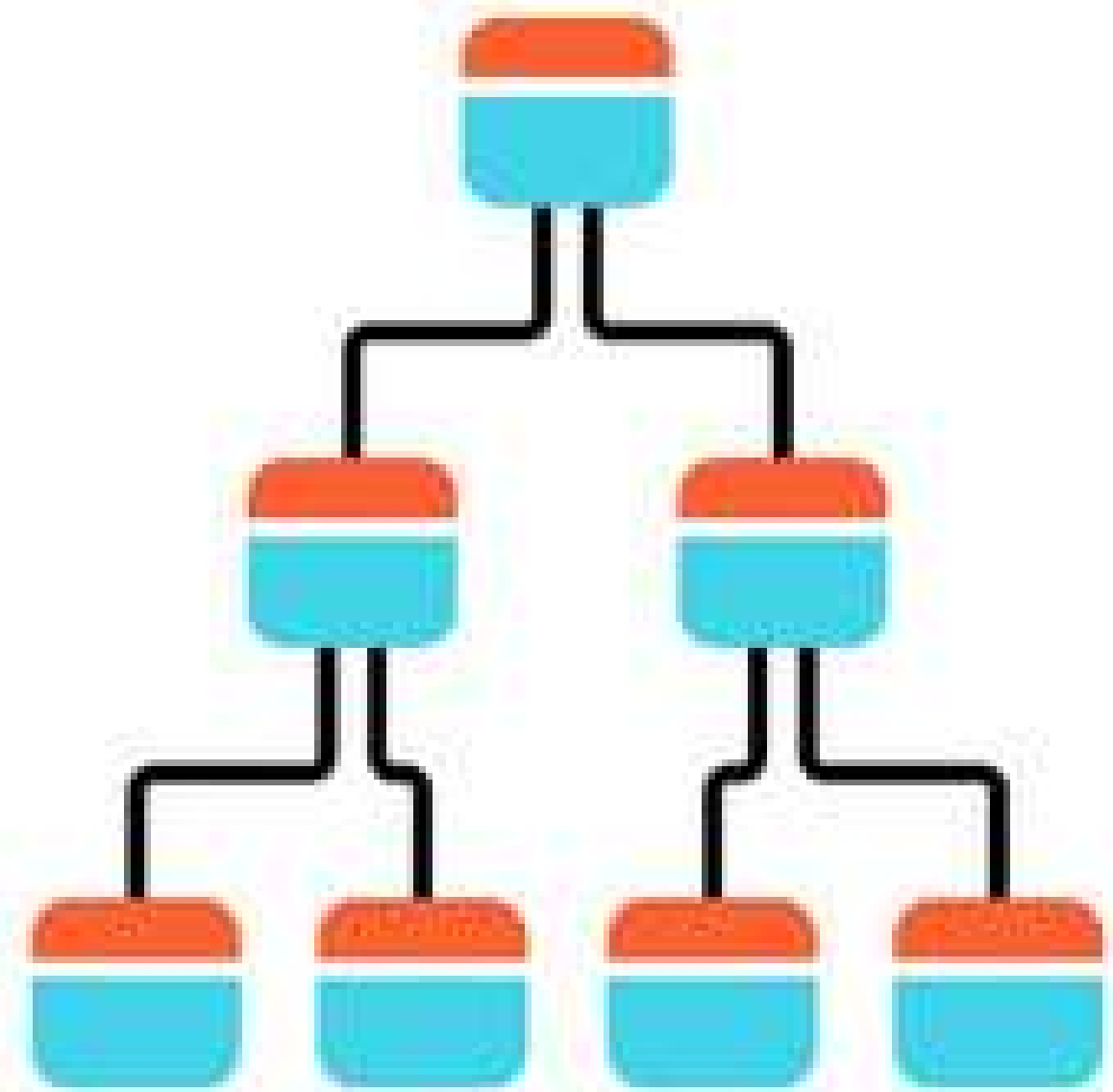


Structured data list

Contents are presented and listed in the most simplified way based on connected data sections.

Subjects are listed based on registered user academic preference.

Under subjects perspective chapters are listed , under chapters topics based on video classes are listed



Powerfull and reliable video player

Every video is delivered through a reliable integrated service based on a powerfull video hosting platform.

User can control the delivery speed of video session.



Recently Watched Section

Watched video session can be accessed in the recent watch section in the application.

Watched video details based on the user will be accessible in the backoffice solution.



Profile session and support

After login user can always change their general signup details except mobile number.

Based on the academic or stream preference the profile stream can be updated in the backoffice solution





Study Materials

Based on topics students or users can access pdf documents as a part of their study materials and question papers

Study materials are restricted to download and even taking screenshots for better content security

Examination/Quiz On boarding

Students can access preferred exams based on a stream with a user friendly experience.

The system follows MCQ method based on its respective classes





Subscription System

Based on a specific course or feature; you can implement subscription based revenue model using subscription management to boost up your revenue

Subscription payments are collected through payment gateway service implementation based on your own business model

Live Class

Tutors can conduct live classes based on batches

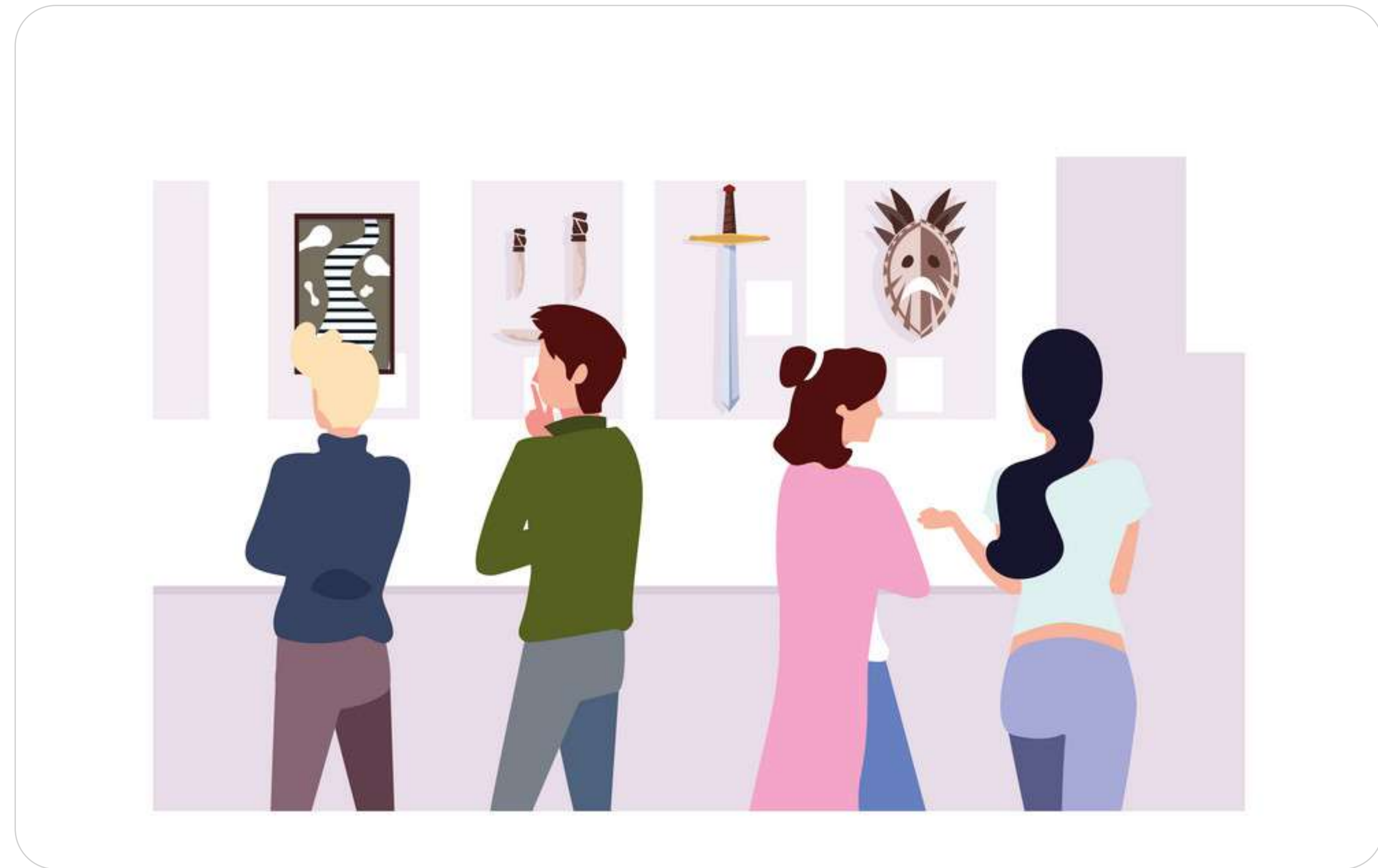
Admin can set and schedule live class based on selecting batch and tutor through back-office console.



Academic Gallery

Latest events or miscellaneous images can be added in the gallery section based on topics

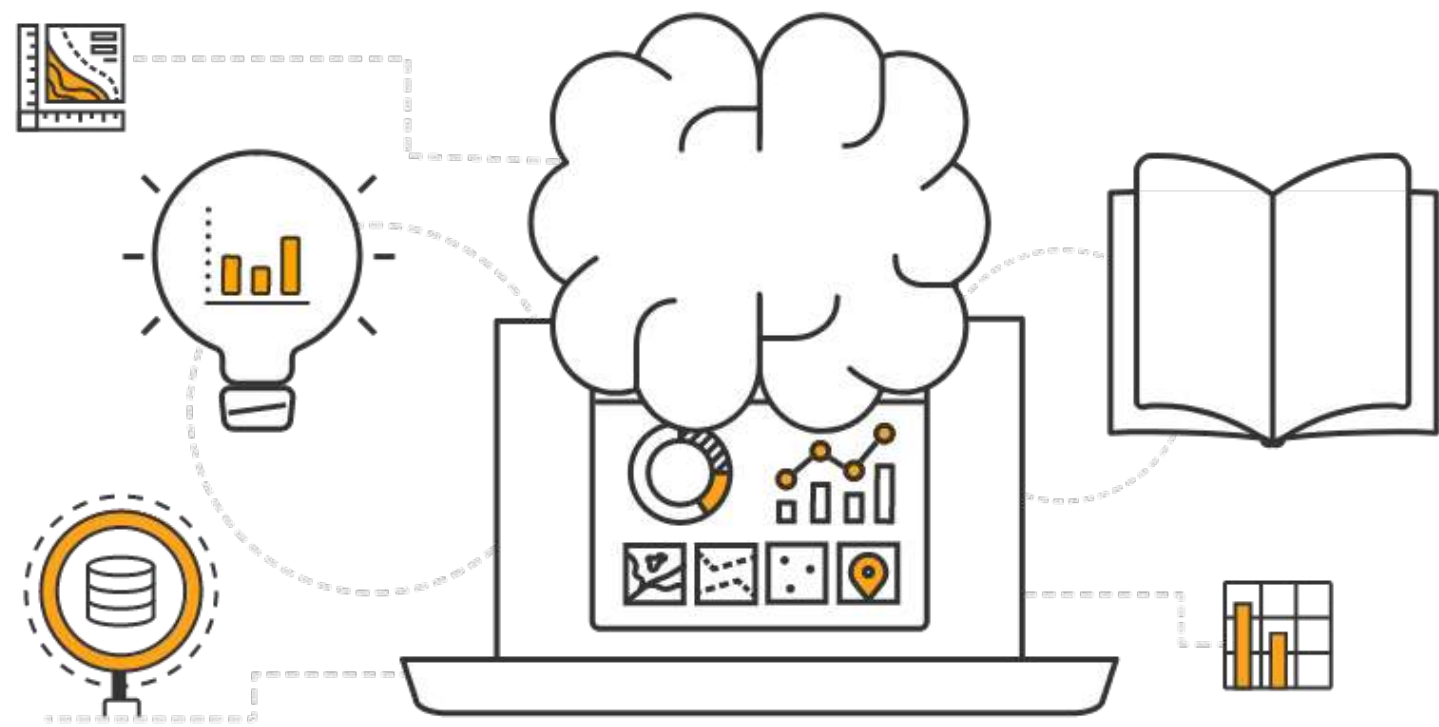
Images are optimized and secured with content capture restriction policy



Student performance analytics

It helps to identify areas of improvement and ensure that students are reaching their full potential. With the help of analytics, it is now possible to track a student's progress over time and make data-driven decisions about their education in the future.

Data analysis are processed based on exams, classes based on pre-recorded and live, study material within witsclass



Solution Security Phase 1

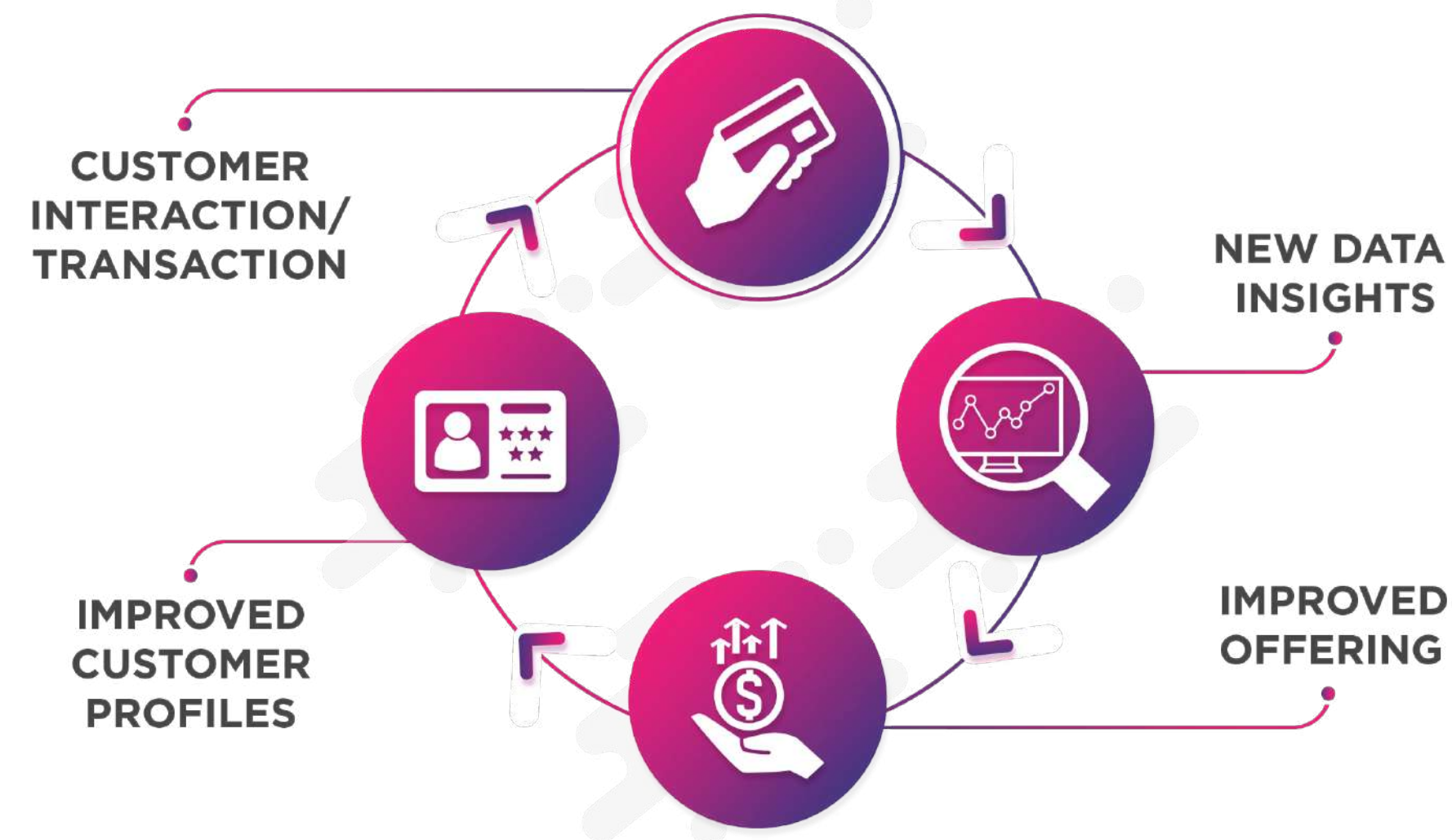
Secure authentication based on single user access identification and restriction to avoid user access replication



Application and **content protection** for video, pdf documents and complete app solution protection by disabling recording using thridparty screen recorders and document screenshots

Solution Security Phase 2

All data is secured with managed WITSCLOUD service in association with oracle **cloud infrastructure**



Additional data backup and security can be implemented based on growth **insights and personalization**

Your Brand Power



Wits Class comes with its own brand but we also provide complete white labelled solution for the enterprise business to feel and explore the advantage of your own brand power and personalized business

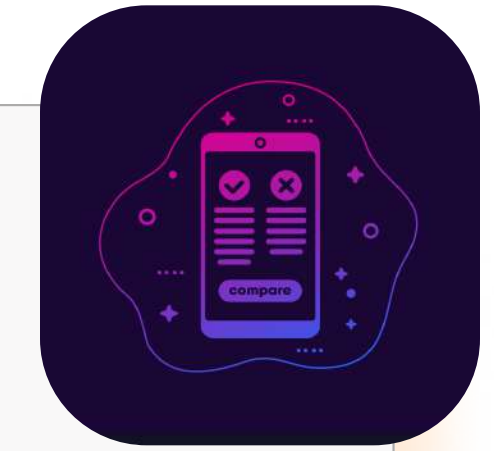
Deliverable Solution Packages - Phase 1



Wits Class V1

Basic

- * Video class component
- * Backoffice solution
- * Landing page web
- * General Witelabelling



Wits Class V2

Standard

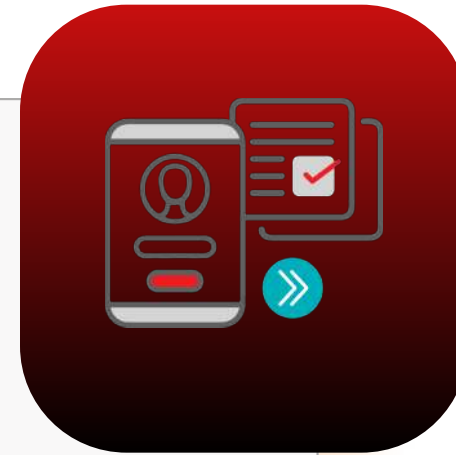
- * Video class with documents component
- * Backoffice solution
- * Landing page web
- * Added content security policy
- * Complete whitelabelling

Deliverable Solution Packages - Phase 2

Wits Class V3

Advanced

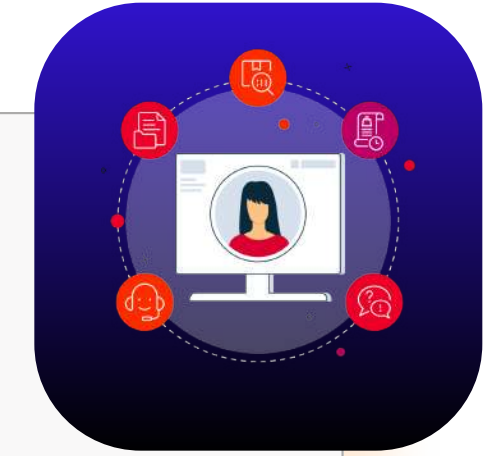
- * V2 components
+
Additional modules
- * Backoffice solution
- * Landing page web site with
web portal



Wits Class v4

Enterprise

- * V3 components
+
Enterprise modules
- * Backoffice solution
- * Landing page web
- * Enterprise security policy



Available solution platforms



Android



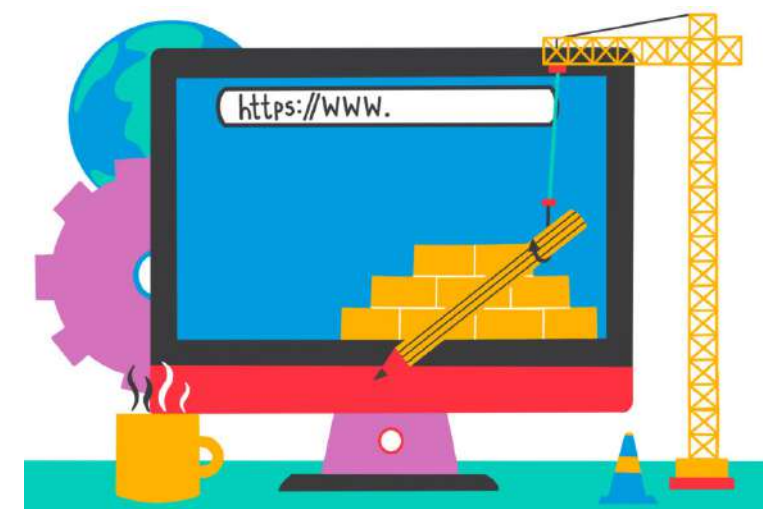
ios



Web Portal



Back office controll panel



Branding Website



Progressive web app

Getting Started With

1

Discussion with Wits Class executive

2

Get an overall idea about Wits Class solution

3

Choose your preferred package

6

Start you new era of business journey

5

Get details of Backoffice to start uploading videos and materials

4

Initialize process for Wits Class deployment.



Contact Us



U.K

True Way,Oxford
5 Withy wind court
4 Beauchamp Lane OX4 3LF
sam@welkinwitstech.com

☎ +44 7943602167



INDIA (HQ)

Govt.CyberPark | KSITIL
Special Economic Zone
Calicut | Kerala-673016
md@welkinwitstech.com

☎ +91 8281331623



www.witsclass.com

For sales enquiries mail to :
sales@witsclass.com